

# ITALSTYL



**BOVELACCI**

# ITALSTYL

## LE CORNICI ESTRUSE PER SOFFITTI

Cornici in polistirene estruso  
Lunghezza: 2 ml per asta  
Angoli in polistirene espanso

## EXTRUDED CEILING MOULDINGS

Extruded ceiling mouldings  
Length: 2 lm  
Expanded PS corner blocks

## EXTRUDIERTE LINEARE ECKLEISTEN

Extrudierte Zierprofile aus Polystyrol  
Länge: 2 Meter  
Ecken aus expandiertem PS

## LAS MOLDURAS EXTRUIDAS DE TECHO

Molduras de poliestireno extruido  
Longitud: 2 ml por barra  
Elementos angulares de poliestireno expandido



1725

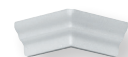
1,8 cm



2,5 cm



IA725I



IA725E

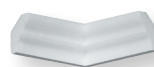


1735

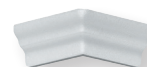
3,5 cm



3,5 cm



IA735I



IA735E

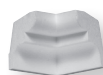


1755

4 cm



5 cm



IA755I



IA755E

# ITALSTYL

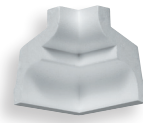


1785

7 cm



8 cm



IA785I



IA785E



1741

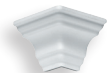
3 cm



3 cm



IA741I



IA741E

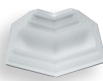


1743

4 cm



4 cm



IA743I



IA743E



1750

5 cm



5 cm



IA750I



IA750E

# ITALSTYL



1768

6 cm



6 cm



1778

7 cm



7 cm



1780

8 cm



8 cm

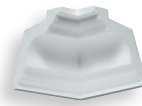


1790

11 cm



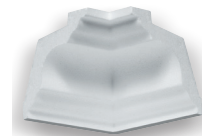
11 cm



IA778I



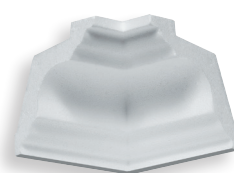
IA778E



IA780I



IA780E



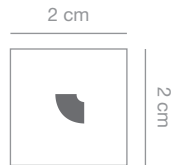
IA790I



IA790E



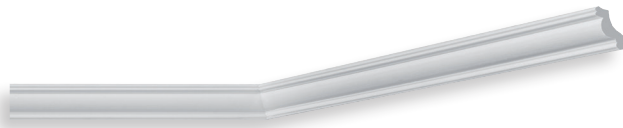
I715



IA715I



IA715E



I702



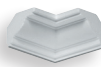
IA702I



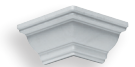
IA702E



I703



IA703I



IA703E

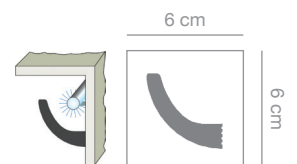
**NEW**



I716



IL06



\* Indicato anche per illuminazione fredda indiretta.  
Temperatura d'impiego: -20° C ÷ +75° C.

\* Suitable also for indirect cold lighting.  
Operating temperature: -20° C ÷ +75° C.

\* Geeignet für indirekte kalte Beleuchtungen.  
Temperatureinsatzbereich: -20° C ÷ +75° C.

\* Indicado también para la iluminación fría indirecta  
Temperatura de aplicación: -20°C ÷ +75°C.

# ITALSTYL

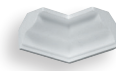


1742

3 cm



3,5 cm



IA742I



IA742E

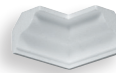


1760

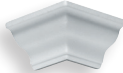
4 cm



4,5 cm



IA760I



IA760E

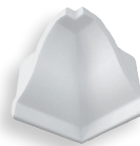


1758

6 cm



6 cm



IA758I



IA758E

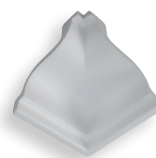


1761

7 cm



7 cm



IA761I



IA761E

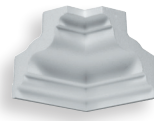


1763

8 cm



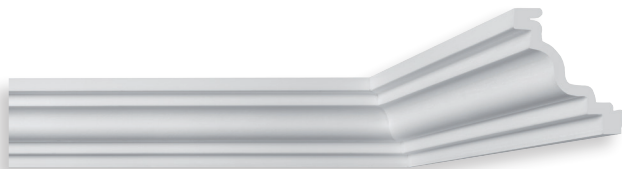
8,5 cm



IA763I



IA763E



1764\*

10 cm



10 cm



1776\*

10 cm



10 cm

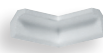


1720

2 cm



2,5 cm



IA720I



IA720E



1704

2,5 cm



2,5 cm



IA704I



IA704E

\* Indicato anche per illuminazione fredda indiretta.  
Temperatura d'impiego: -20° C ÷ +75° C.

\* Suitable also for indirect cold lighting.  
Operating temperature: -20° C ÷ +75° C.

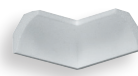
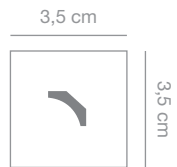
\* Geeignet für indirekte kalte Beleuchtungen.  
Temperatureinsatzbereich: -20° C ÷ +75° C.

\* Indicado también para la iluminación fría indirecta  
Temperatura de aplicación: -20°C ÷ +75°C.

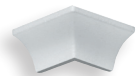
# ITALSTYL



1705



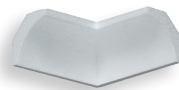
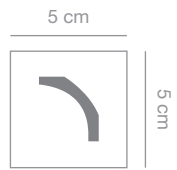
IA705I



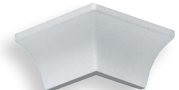
IA705E



1706



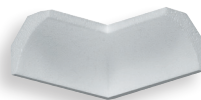
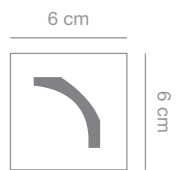
IA706I



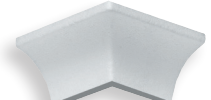
IA706E



1762



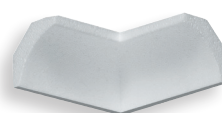
IA762I



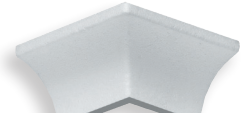
IA762E



1766



IA766I

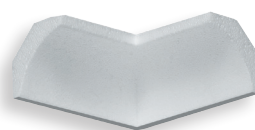
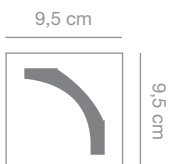


IA766E

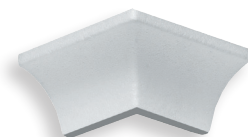




1767



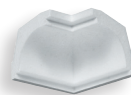
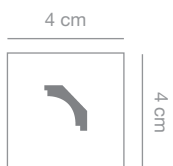
IA767I



IA767E



1747



IA747I



IA747E



1707



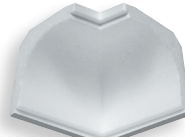
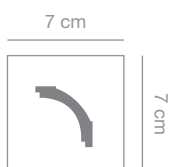
IA707I



IA707E



1765



IA765I

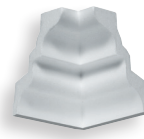
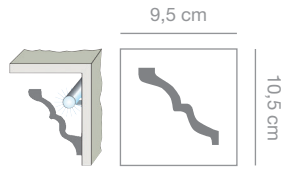


IA765E

# ITALSTYL



I775\*



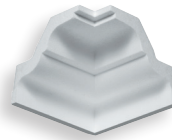
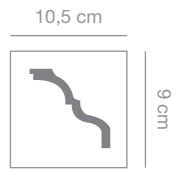
IA775I



IA775E



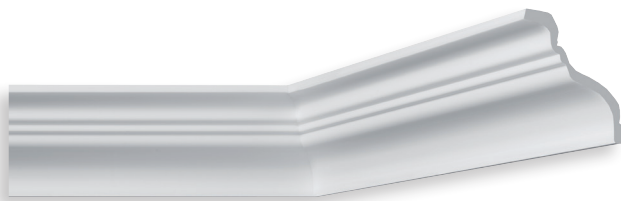
I777



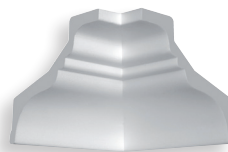
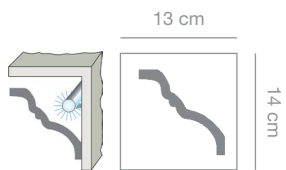
IA777I



IA777E



I793\*



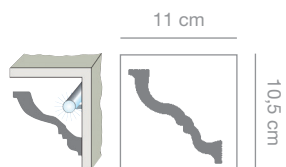
IA793I



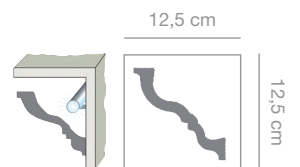
IA793E



I792\*



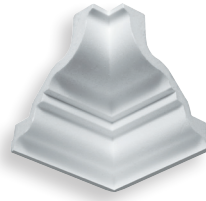
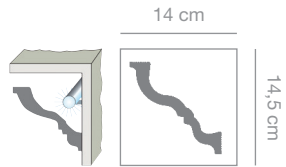
I794\*



# ITALSTYL



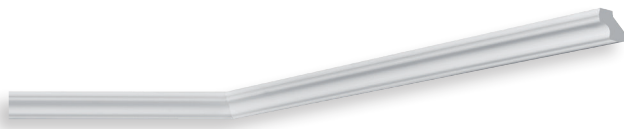
I795\*



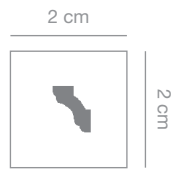
IA795I



IA795E



I737



IA737I



IA737E



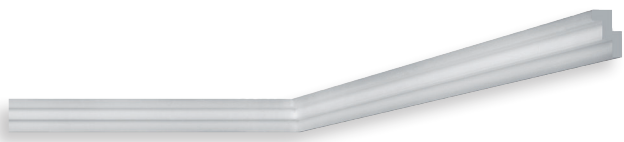
I740



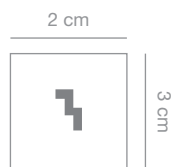
IA740I



IA740E



I717



IA717I

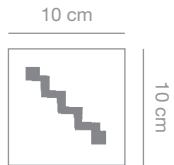


IA717E

# ITALSTYL



1779



IA779I



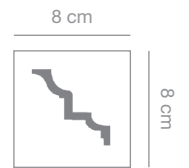
IA779E



1732



1734



## Italstyl

LE CORNICI ESTRUSE  
E GLI ANGOLI  
PER PARETI E SOFFITTI

Cornici in polistirene estruso  
Lunghezza: 2 ml per asta  
Angoli in polistirene espanso

EXTRUDED PANEL  
MOULDINGS  
WITH CORNERS

Extruded panel mouldings  
Length: 2 lm (78 3/4")  
Expanded PS corner blocks

EXTRUDIERTER  
WANDLEISTEN  
UND BÖGEN

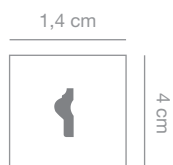
Extrudierte Zierprofile aus  
Polystyrol  
Länge: 2 Meter  
Bögen aus expandiertem PS

LAS MOLDURAS EXTRUIDAS  
Y LOS ELEMENTOS ANGU-  
LARES DE PARED Y TECHO

Molduras de poliestireno extruido  
Longitud: 2 ml por barra  
Elementos angulares de  
poliestireno expandido



1709



IA709LP

14,5 x 14,5 - r. 8 cm



IA709LG

20,5 x 20,5 - r. 12,5 cm



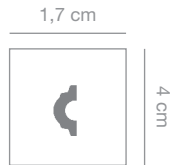
IA709D

20,5 x 20,5 cm

# ITALSTYL



I745



IA745LP  
15 x 15 - r. 8 cm



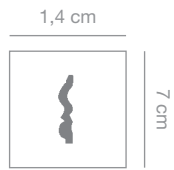
IA745LG  
20 x 20 - r. 12,5 cm



IA745D  
20 x 20 cm



I770



IA770LP  
15 x 15 - r. 8 cm



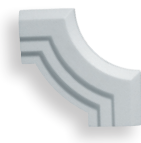
IA770LG  
22,5 x 22,5 - r. 15 cm



IA770D  
22 x 22 cm



I710



IA710LP  
15 x 15 - r. 8 cm



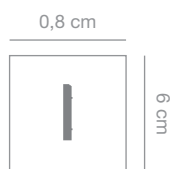
IA710LG  
20 x 20 - r. 12,5 cm



IA710D  
22 x 22 cm



I701



IA701LP  
14 x 14 - r. 6 cm



IA701LG  
20 x 20 - r. 12,5 cm

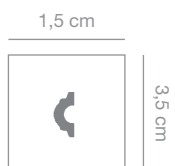


IA701D  
20 x 20 cm

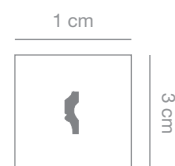
# ITALSTYL



1744



1771



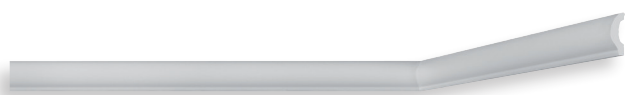
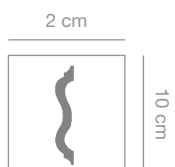
1772



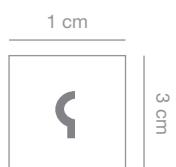
1773



1774



1801



IA801LP  
14 x 14 - r. 6 cm



IA801LG  
20 x 20 - r. 12,5 cm

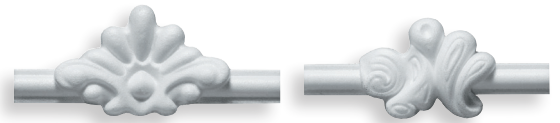
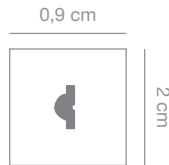


IA801D  
20 x 20 cm

# ITALSTYL



I802



IF802DC  
15,5 x 6,5 cm

IF802DF  
15,5 x 6,5 cm



IA802LG  
18,5 x 18,5 - r. 9 cm  
IT802  
6 x 6 - r. 6 cm



IA802LM  
15,5 x 15,5 - r. 8,5 cm



IA802LP  
8 x 8 - r. 4 cm



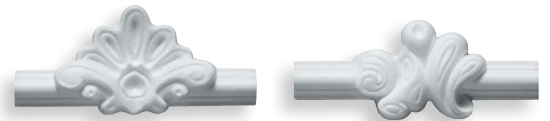
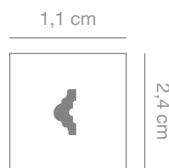
IA802DG  
15,5 x 15,5 cm



IA802DP  
12 x 12 cm



I803



IF803DC  
15,5 x 7 cm

IF803DF  
15,5 x 6,5 cm



IA803LG  
20 x 20 - r. 11,5 cm  
IT803  
9 x 9 - r. 9 cm



IA803LM  
15,5 x 15,5 - r. 8,5 cm



IA803LP  
10,5 x 10,5 - r. 5 cm



IA803DG  
15,5 x 15,5 cm



IA803DP  
10,5 x 10,5 cm

# ITALSTYL



ERF803/52DG

L.43 x p. 3,5 x H. 36 cm  
(1/4 di cerchio ø 52 cm)



ERF803/52DP

L.43 x p. 4 x H. 23,5 cm  
(1/4 di cerchio ø 52 cm)



ERF803/52L

L. 40 x H. 10  
(1/4 di cerchio ø 52 cm)



1816

2 cm



2 cm



1821

2 cm

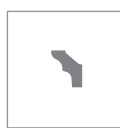


2,5 cm



1826

1,8 cm



2,5 cm



1836

3,5 cm



3,5 cm



1856

4 cm



5 cm



1886

7 cm



8 cm



# ITALSTYL



1883

1,6 cm

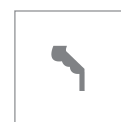


2,2 cm



1845

1,6 cm



2,4 cm



1865

3 cm

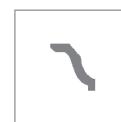


4 cm



1835

3 cm



3,5 cm



1867

4 cm



5 cm



1837

4,5 cm



5 cm



1847

3 cm



4 cm



DVAD VALIGIA DECO  
Italstyl - Extrastyl - Eurostyl



DTOC19 TOTEM COLLECTION 2019  
Classicstyl - Americanstyl - Newstyl Brickstyl - Italstyl - Rosoni



DDI ITALSTYL

### LE ISTRUZIONI PER IL MONTAGGIO

### ASSEMBLING INSTRUCTIONS

### VERARBEITUNGSTIPS

### INSTRUCCIONES DE MONTAJE

È preferibile posare le cornici, gli angoli ed i rosoni prima di tappezzare le pareti. I prodotti devono essere applicati su pareti asciutte, pulite e sgrassate. Sono sufficienti i seguenti accessori: cassetta per taglio, sega speciale Bovelacci, Eurocoll Plus, spatola, spugna, pittura, pennelli, cutter e metro.

We suggest to install mouldings, corners and roses before wallpapering. Items must be applied on dry clean and ungreased surfaces. You need only the following tools: mitre-box, Bovelacci special saw, glue Eurocoll Plus, spatula, sponge, paint, brush, cutter and metre.

Wir empfehlen die Zierprofile, Ecken, Rosetten nach Möglichkeit vor den Tapezierarbeiten zu verkleben. Der Untergrund muss saugfähig, sauber, trocken und staubfrei sein. Folgende Werkzeuge werden benötigt: Gehrungslade, Bovelacci-Spezialsäge, Eurocoll Plus-Klebstoff, Spachtel, Schwamm, Farbe, Pinsel, Cuttermesser und ein Zollstock.

Aconsejamos pegar las molduras, los elementos angulares y los rosetones antes del papel tapiz. Los productos tienen que ser instalados en paredes secas, limpias y sin grasa. Son suficientes los siguientes accesorios: caja de cortar, sierra especial Bovelacci, Eurocoll Plus, espátula, esponja, pintura, pinceles, cortador y metro.



LE CORNICI

MOULDINGS

ZIERLEISTEN

LAS MOLDURAS



1



2



3



4



5



6

Classicstyl - Americanstyl - Newstyl - Profilstyl - Italstyl - Eurostyl - Extrastyl

1. Iniziare a tagliare le cornici in modo da realizzare gli angoli che vi servono. Controllate che combinino.

2. Stendere la colla speciale Eurocoll Plus su entrambe le superfici posteriori dell'asta che andranno a contatto con la parete o il soffitto, nonché fra le giunture (incidenza media: 1 cart. x 8 ml).

Classicstyl - Americanstyl - Newstyl  
Per l'installazione utilizzare Eurocoll Plus e chiodini in acciaio senza testa.

3. Applicare la cornice alla parete con una leggera pressione. Dopo una settimana riempite con la colla ogni giuntura o spazio.

4. Togliete l'eccesso di colla con l'aiuto di una spatola.

5. Pulite quindi con l'aiuto di una spugna.

6. Lasciate asciugare e rifinite con vernice a base d'acqua.

1. Cut straight ends to make the type of corners you need. Check fit.

2. Apply the special glue Eurocoll Plus on both back surfaces of the stick meant to lean on the wall and inside the joint (average incidence: 1 cart. x 8 ml).

Classicstyl - Americanstyl - Newstyl  
For installation use Eurocoll Plus and steel nails without head.

3. Press pieces into the corner with a light pressure. After a week fill all joints and gaps with glue.

4. Remove glue in excess by using a spatula.

5. Wipe smooth with a clean damp sponge.

6. Let dry and apply water-based paint.

1. Beim Schneiden der Gehrung ist unbedingt darauf zu achten, dass die "Deckenklebefläche" des Zierprofils auf dem Boden und die "Wandklebefläche" an der Innenwand der Gehrungslade liegt.

2. Nachdem die Gehrung auf Passgenauigkeit geprüft wurde, wird der Klebstoff Eurocoll Plus auf beide Klebeflächen und im Stoßbereich mit der Kartusche oder mit dem Spachtel aufgetragen (durchschnittlicher Verbrauch: 1 Kart. x 8 ml).

Classicstyl - Americanstyl - Newstyl  
Zum Fixieren der Leisten können Sie Eurocoll Plus und Stahlstifte verwenden.

3. Das Zierprofil passgenau ansetzen und vorsichtig andrücken.  
Nach einer Woche alle Fugen und Stöße mit Klebstoff füllen.

4. Überschüssigen Klebstoff mit einem Spachtel sofort entfernen.

5. Anschließend Klebstoffreste mit einem feuchten Schwamm sofort abwaschen.

6. Die Zierprofile können nach einer Trocknungszeit von ca. 24 Std. mit Dispersionsfarbe oder Acryllack überstrichen werden.

1. Cortar las molduras para obtener los ángulos que necesita. Asegurarse que combinen.

2. Aplicar el adhesivo especial Eurocoll Plus en ambas las superficies posteriores de las barras que se pegarán a la pared o al techo y entre las juntas (incidencia media: 1 cartucho x 8 ml).  
Classicstyl - Americanstyl - Newstyl.  
Para la aplicación usar Eurocoll Plus y clavos de acero sin cabeza

3. Presionar levemente la moldura a la pared. Después de una semana sellar cada junta y espacio con Eurocoll Plus.

4. Quitar el exceso de cola con una espátula

5. Limpiar usando esponja

6. Dejar que seque y terminar con pintura a base de agua.

**BOVELACCI**

Bovelacci S.r.l. - via del Commercio 5 - 47122 Forlì - Italy

Tel. +39 0543 811611 - Fax +39 0543 721127

bovelacci@bovelacci.it - [www.bovelaccidecor.com](http://www.bovelaccidecor.com)

per carico merci: Bovelacci Cargo - Via Dei Mercanti, 8 - 47122 Forlì - Italy

